



Finding Home in the Heart

A Capital Campaign for St. Margaret's House



Our Mission



**Through the healing power
of a loving community,
St. Margaret's House
affirms the dignity of women
and children by providing
a safe space and
meeting essential needs.**



To accomplish our mission, we work every day to:



Meet Guests' Essential Needs

We attend to essential and immediate needs with a healthy lunch, hot showers, rest, clothing, toiletries, and access to phone, mail, and computers.



Provide Guest Services & Programming

We provide individual attention, referrals, and programs to help women take concrete steps to improve their lives.



Build Relationships

We welcome women and children into a safe community of care and support that changes lives.

For 36 years, we have addressed needs with care and compassion.

In our 2025 Guest Survey*, our guests describe St. Margaret's House as a place where basic needs are met with dignity—where hearts and lives are renewed through relationships, encouragement, and hope. Our guests told us:

- *My complete emotional and mental health system was gone and St. Margaret's House has helped me rebuild that.*
- *They always make me feel welcome. I now have somewhere to go that is safe.*
- *Because of St. Margaret's House, I now have 13 years clean.*
- *They were there for me when I had no one.*
- *Safe, welcoming place during a time when I needed stability.*
- *I've begun to love myself more.*



61%

of our guests have an income of less than \$1,000 per month*

For nearly

8 in 10

of our guests, "home" is uncertain—from homelessness to unsafe or temporary housing*

*Data and quotes from St. Margaret's House Annual Guest Survey, August 2025

The Challenges

On an average day at St. Margaret's House, we see...

75–100 women
seeking safety
and community
assistance

5-10 guests
experiencing
symptoms of
withdrawal

5-10 guests
with untreated
serious mental
illness

**Moments
of Grace**

Staff on
constant alert
ready to
de-escalate

Situations
with no
resolution
available

“Our space stresses everyone. The over-stimulation does not help. You can't hear yourself talk or think.”

~ Staff member

“When you enter the first floor and the dining area, it's overwhelming. You're accosted with so many people, the smells, the sounds, so much activity. It's a lot!”

~Volunteer

“The walls here remind me of a jailhouse.”

~ Guest

Our guests deserve a safe,
hospitable, trauma-informed space
that supports these intersecting realities.



We envision a space that represents and reflects the needs and the identity of our community.

Months of thoughtful research, listening, planning, and community engagement activities have led to a comprehensive building plan for St. Margaret's House.



“We have a deep respect for the rich tapestry of stories, backgrounds, experiences, and cultures that each person brings to St. Margaret’s House. We want to weave that richness into our physical environment.”

— Mary Fran Brandenberger, Former Associate Executive Director

Our guests, volunteers, and staff have participated in the visioning of a safe, healing, beautiful space—including selecting amenities, colors, and finishes.



In the Heart of South Bend



Our new space will build on our optimal location in the heart of downtown South Bend.



6,400

square feet of
additional space

61% increase

in total square feet

88% increase

in square feet of space
dedicated to programming

750% increase

in square feet of our main
vestibule and entryway

65% increase

in the size of our main
dining and common room

828% increase

in square feet of space
dedicated to rest, mental
health, and decompression;
including a beautiful
chapel/tranquility space.



Increasing Our Capacity



Investing in our physical space will allow us to meet our mission better ... and more expansively:

	CURRENT CAPACITY	PROJECTED CAPACITY
Increased capacity for meal service and community in the dining area	15,600 meals per year 60 guests per day (cramped)	23,400 meals per year 90 guests per day (comfortably)
Increased programming offerings	1 formal programming room	3 formal programming rooms
Laundry access for guests	Not currently available	up to 3000 loads per year (12 loads of guest laundry per day)
Increased hours of operation to meet critical gaps	10am – 3pm	8am – 6pm (in phases, as revenue allows)
Addition of full hot breakfast	Continental breakfast and hot lunch daily	Freshly prepared hot breakfast and hot lunch daily

Our New Building

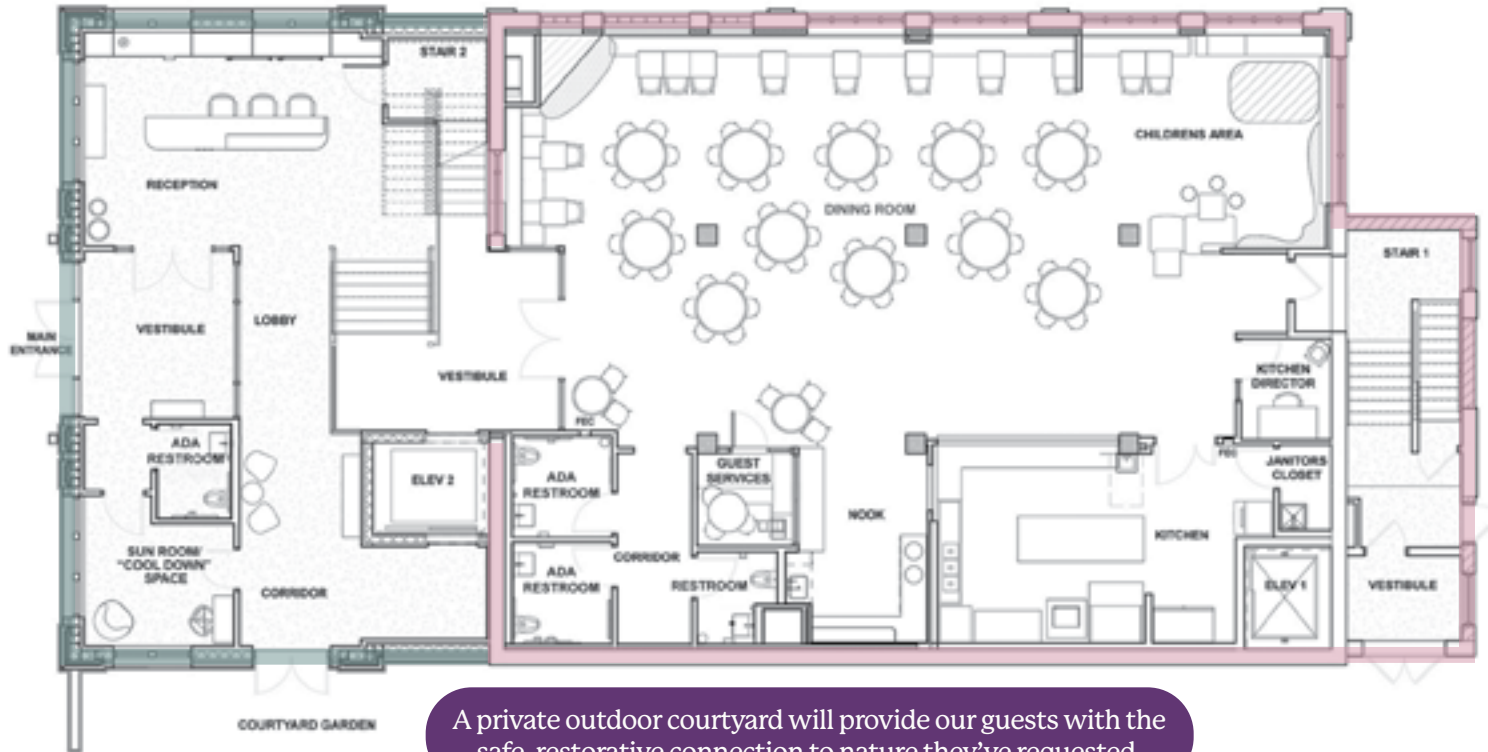
A new southern-facing entrance will ensure St. Margaret's House is more visible to the greater community.

Architect's rendering of proposed design for building exterior.

Our New First Floor

FIRST FLOOR/GRADE LEVEL | ENTRANCE + RECEPTION | DINING ROOM

ADDITION | EXISTING STRUCTURE



A private outdoor courtyard will provide our guests with the safe, restorative connection to nature they've requested.

Our New Entrance

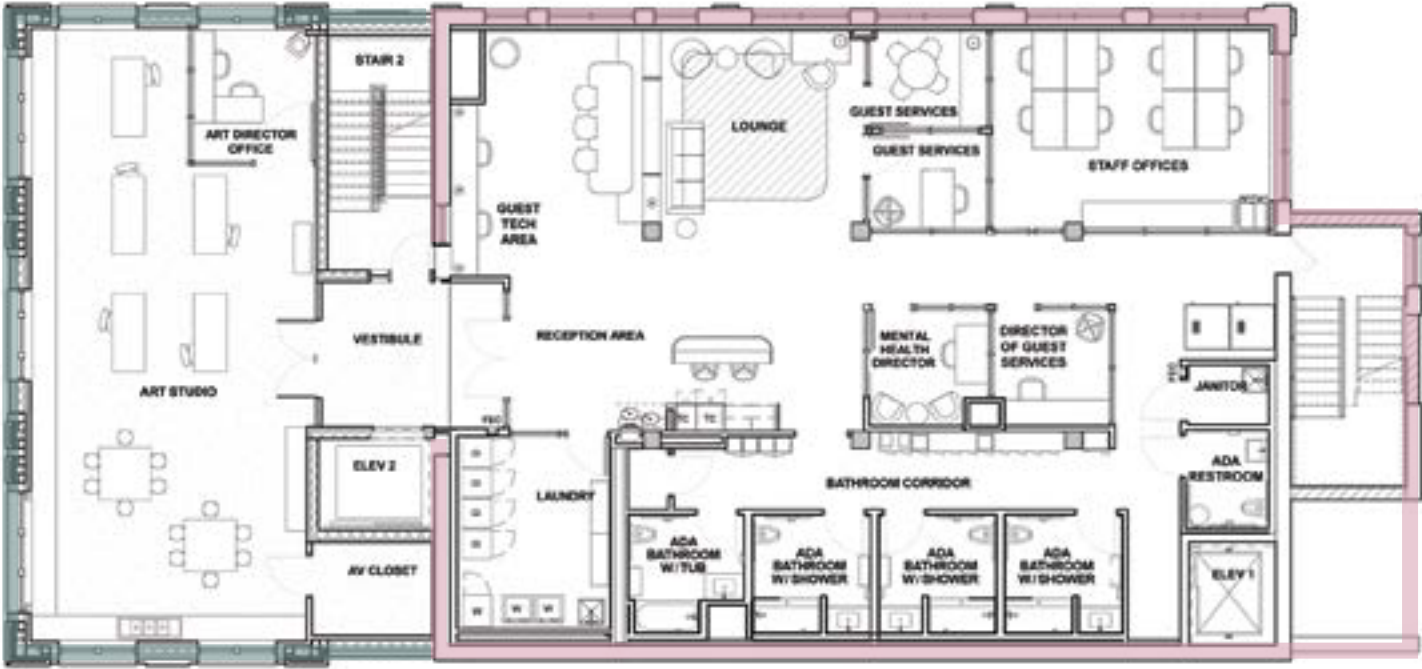
Placing our reception desk next to the vestibule will allow us to welcome guests face-to-face, rather than by security camera.

Architect's rendering of proposed design for reception area.

Our New Second Floor

SECOND FLOOR | GUEST SERVICES | LAUNDRY + SHOWER/BATH AREA | ART STUDIO

ADDITION | EXISTING STRUCTURE



Our second floor features more one-on-one meeting spaces, added laundry facilities, and an expanded shower/bathroom area. The Art Studio moves from the third floor, with extra space to welcome new artists.



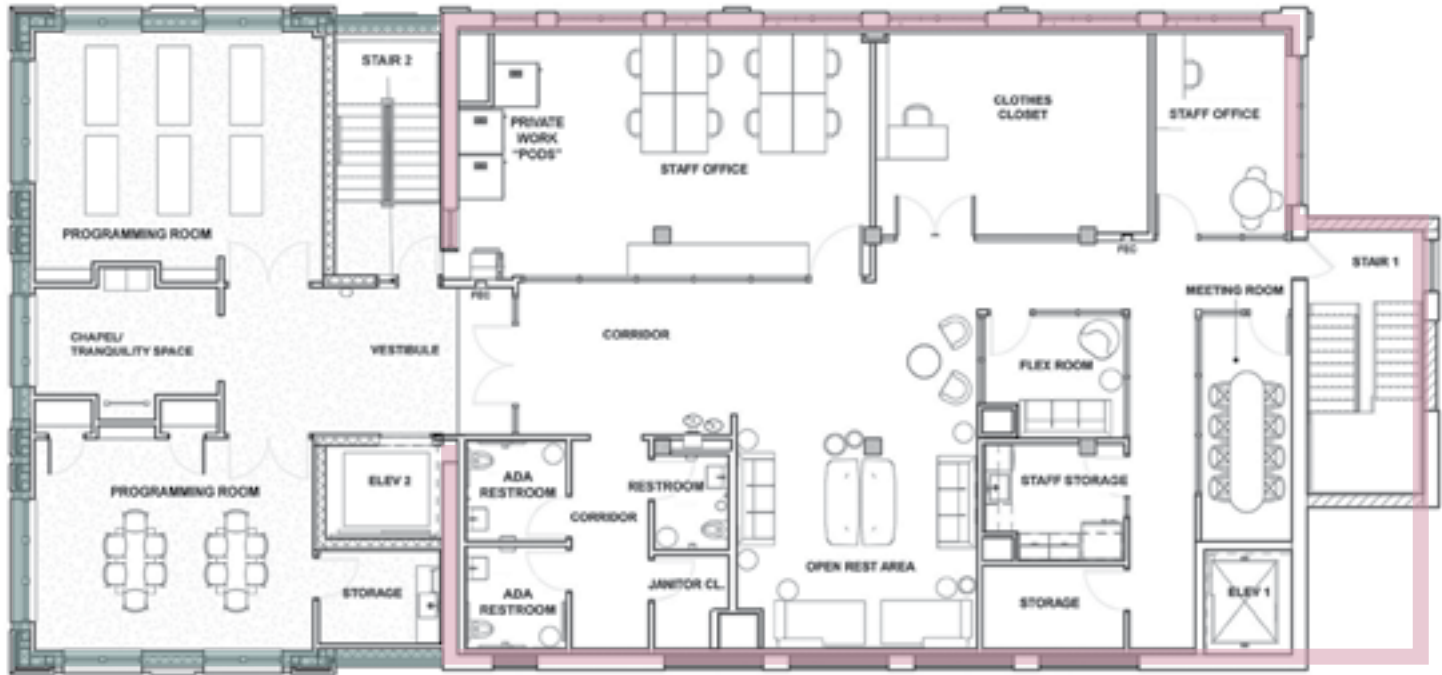
We've expanded the dining and commons area by 65%, allowing us to increase the number of people we serve each day.

Architect's rendering of proposed design for dining area.

Our New Third Floor

THIRD FLOOR | PROGRAMMING SPACES | CLOTHES CLOSET | REST AREA | OFFICES

ADDITION | EXISTING STRUCTURE



Our third floor offers an improved layout with two formal programming rooms, a purposefully designed Clothes Closet, a more dignified resting area, and a beautiful new chapel/tranquility space.

An Invitation



This is more than bricks and mortar.

It is hope.

It is dignity.

It is home.

Please join us in building it.

Project Timeline

2023	2024	2025	2026	2027
Design Development & Refinement + Workshops with Guests/Staff/Volunteers				
Capital Campaign: "Quiet" Phase		"Public" Phase		
Final Pricing/Construction Documents				
Relocation of Services to Cathedral				
Construction Phase				
				Move-In

Project Budget

CONSTRUCTION COSTS TOTAL \$7,244,168

OTHER PROJECT COSTS TOTAL \$1,170,825

- Professional fees & consultants
- Furniture, fixtures & equipment
- Technology & safety
- Miscellaneous fees
- Project cost contingency

Total Investment **\$8,414,993**



When this campaign launched publicly, we shared a bold vision — and our community has responded.

To date, we have raised more than \$7 million of the project’s total cost, a sign of our community’s remarkable trust in and support for St. Margaret’s House.



St. Margaret's House

Katie Elliot, Executive Director

katie@stmargarethouse.org

Lauren Shewman-Smyth, Senior Director of Strategy & Development

lauren@stmargarethouse.org

stmargarethouse.org

574-234-7795



Portraits in this piece feature the women of our St. Margaret's House community. Photography by Emily Allison, Hey Sisters! Photography